

2019-5

SETTLING AND EQUALIZATION PONDS
GENERAL NOTES:

- 1. SITE PREPARATION FOR PONDS INCLUDES CLEAR, GRUB, AND STRIP SOIL.
2. PONDS TO BE EXTRACTED INTO ROCK. PERIMETER BERMS TO BE USED AS REQUIRED TO MAINTAIN PERIMETER OF SETTLING POND AT ELEVATION 240.0 mASL.
3. ROCK CUT AS REQUIRED FOR PERIMETER DITCHES AND OUTFLOW/INFLOW CHANNELS FOR PONDS.
4. WATER ELEVATIONS IN POND TO BE MAXIMUM ELEVATION CONTROLLED BY OUTFLOW CHANNEL ELEVATION.
5. SETTLING POND PROVIDES FOR 0.5 m OF SEDIMENT ACCUMULATION IN BASE.
6. SETTLING POND TO COLLECT RUNOFF AND WASH WATER FROM STOCKPILE AND PROCESSING AREA.
7. EQUALIZATION POND TO COLLECT POTENTIAL SEASONAL OUTFLOW FROM SETTLING POND AND DISCHARGE FROM QUARRY DEWATERING.

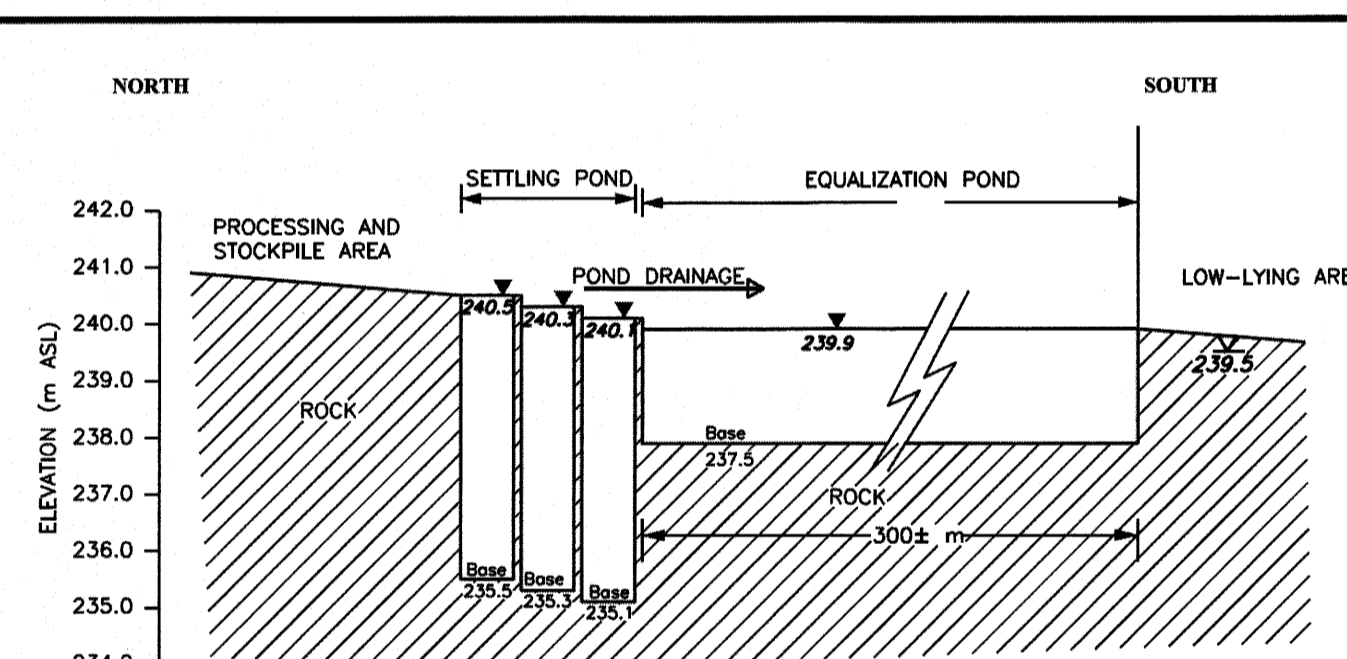
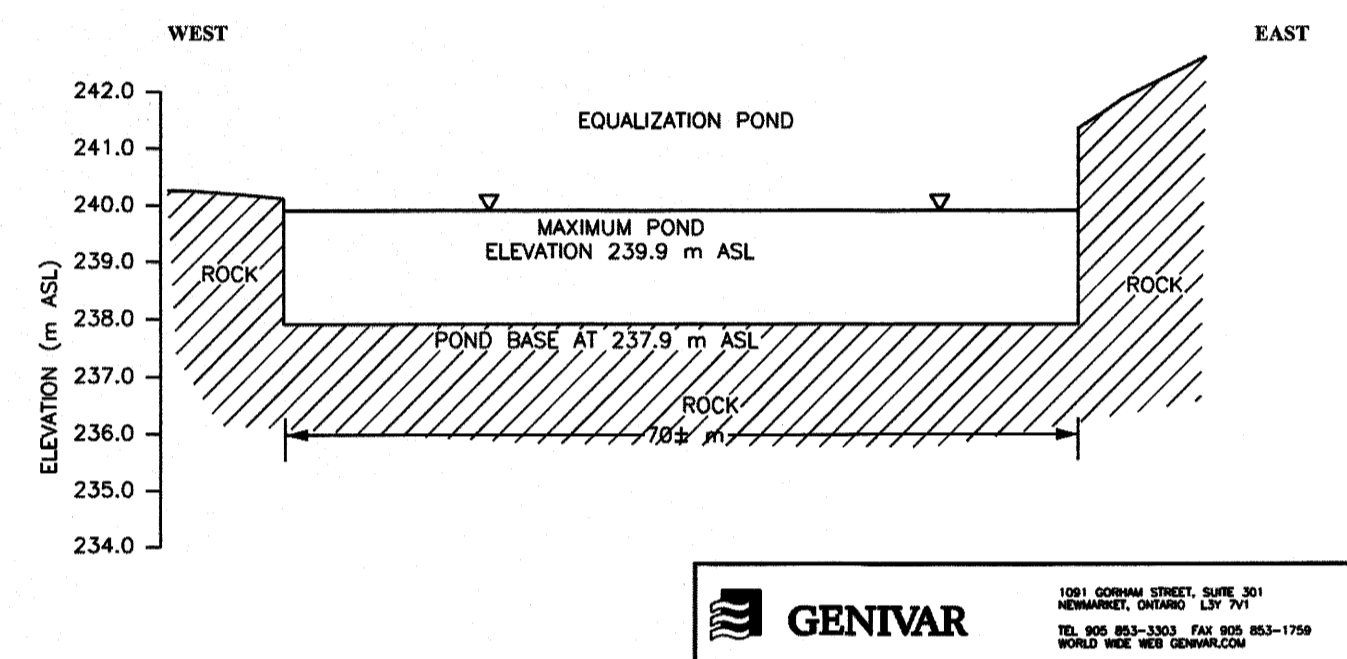
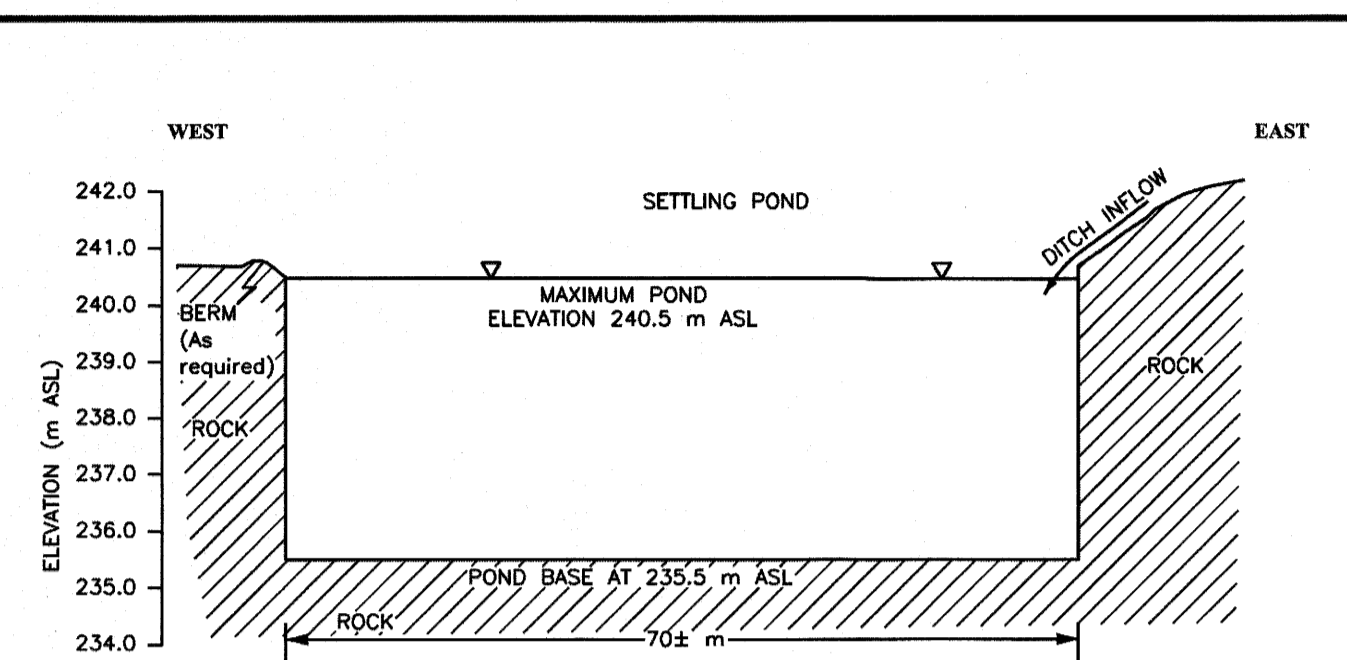


Table with 4 columns: PARAMETER, FREQUENCY, LOCATIONS, TRIGGER MECHANISMS, ACTION, SUGGESTED CONTINGENCY MEASURES. Rows include Groundwater levels, Groundwater quality, Surface Water Flow Rates, Surface Water Quality, Quarry Discharge, and various monitoring parameters like pH, conductivity, and turbidity.

Table with 4 columns: PARAMETER, FREQUENCY, LOCATIONS, TRIGGER MECHANISMS, ACTION, SUGGESTED CONTINGENCY MEASURES. Rows include Surface water and discharge, and Condition of 30 m Buffer and Sedimentation and Erosion Controls.

Table with 4 columns: PARAMETER, FREQUENCY, LOCATIONS, TRIGGER MECHANISMS, ACTION, SUGGESTED CONTINGENCY MEASURES. Rows include Ground Vibration and Overpressure, and Monitoring shall conform to industry standards.

Table with 4 columns: SOURCE OF DUST, CONTROL MEASURE, TRIGGER MECHANISM, INSPECTION AND MAINTENANCE. Rows include Aggregate crushing and screening, Unpaved Roads, Paved Roads, Truck Loading and Transportation, Wind erosion of Exposed Faces, and Rock Drilling.

Table with 2 columns: IMPLEMENTATION and RECORD KEEPING. Includes details on control measures, complaint procedures, and record keeping requirements.

Table with 4 columns: CONTENT, GROUNDWATER AND SURFACE WATER, NATURAL ENVIRONMENT, BLASTING. Rows include Historic data, Assessment of changes, Comparison of data with trigger mechanisms, Summary of mitigative measures, and Summary of public complaints.

SCHEDULE OF AMENDMENTS table with columns: NO., DATE, DESCRIPTION, APPROVED. Shows one amendment on April 19, 2011 for general revisions.

TRUDY P. PATERSON IS APPROVED BY THE MINISTRY OF NATURAL RESOURCES PURSUANT TO SECTION 8 (4) OF THE AGGREGATE RESOURCES ACT TO PREPARE AND CERTIFY SITE PLANS.

GIOFAM SEBRIGHT QUARRY CITY OF KAWARTHA LAKES. APPLICANT: GIOFAM INVESTMENTS INC. BOX 1359 UXBRIDGE, ONTARIO L9P 1N6

DETAILS table with columns: PROJECT NO. 05-2019, DRWG. NO. 052019, DATE: APRIL 2011, SCALE: 1:1000, DRAWN: CJU/CAP, CHECKED: [initials], APPROVED: [initials]

Skelton Brumwell ENGINEERING PLANNING ENVIRONMENTAL CONSULTANTS 93 BELL FARM ROAD, SUITE 107 BARRIE, ONTARIO L4M 5G1 TELEPHONE (705) 726-1141 FAX (705) 726-0331