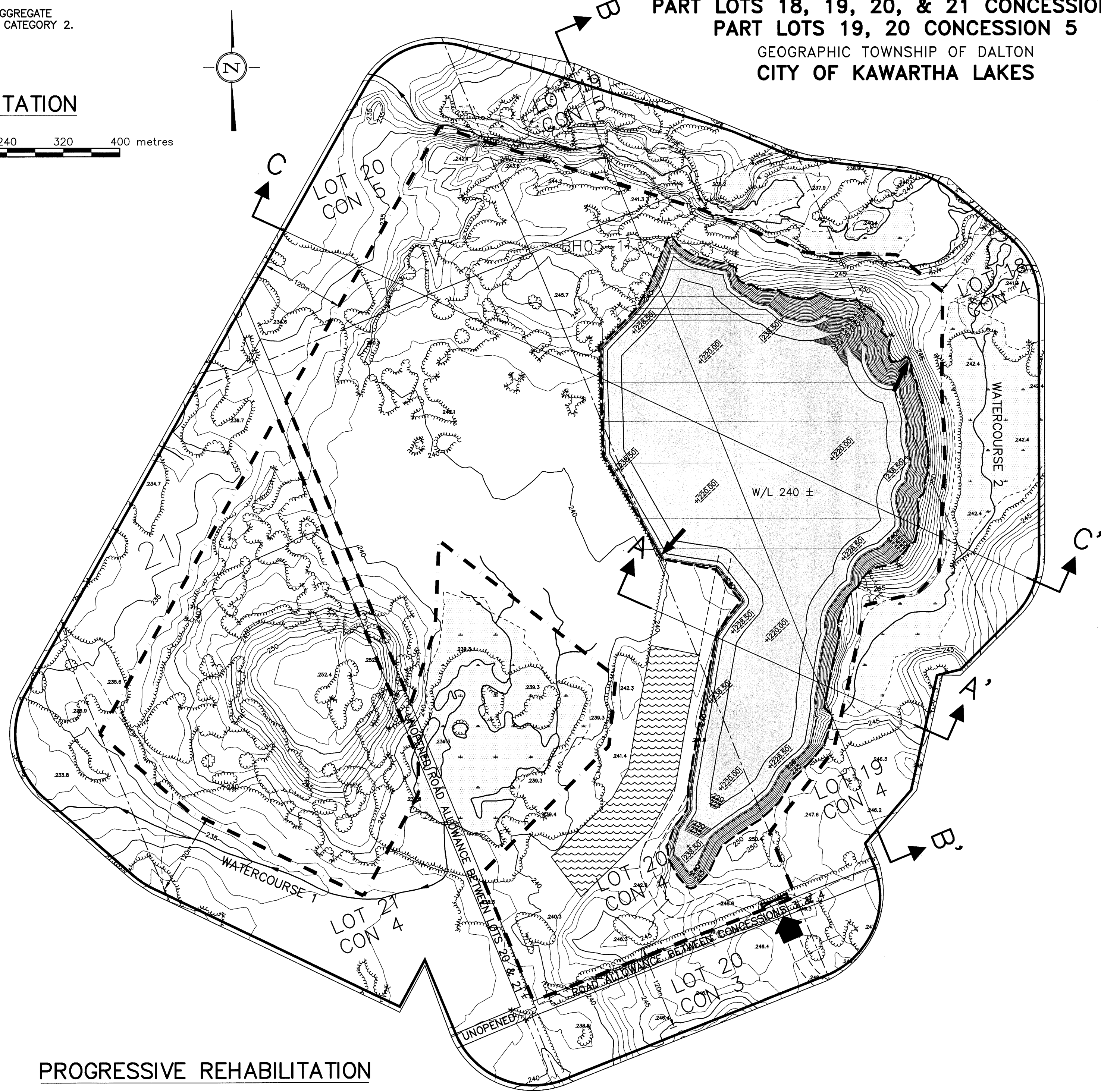
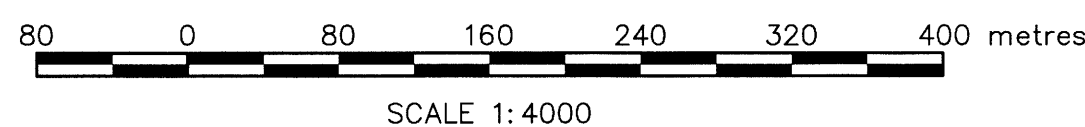


2019-3

**DECLARATION OF PURPOSE**  
 THIS SITE PLAN IS PREPARED UNDER THE AGGREGATE RESOURCES ACT FOR A CLASS 'A' LICENCE, CATEGORY 2.

**PART LOTS 18, 19, 20, & 21 CONCESSION 4  
 PART LOTS 19, 20 CONCESSION 5  
 GEOGRAPHIC TOWNSHIP OF DALTON  
 CITY OF KAWARTHA LAKES**

**FINAL REHABILITATION**



**PROGRESSIVE REHABILITATION**

- A STAGING**
- STAGING OF PROGRESSIVE AND FINAL REHABILITATION WILL FOLLOW THE DIRECTION AND SEQUENCE OF EXTRACTION AS SHOWN ON THE OPERATIONAL PLAN AND THIS PLAN.
  - AS THE HORIZONTAL LIMIT OF EXTRACTION IS REACHED IN ANY PART OF EACH PHASE, SLOPES WILL BE ESTABLISHED BY BACKFILLING WITH ON-SITE MATERIALS, CUT AND FILL, OR EXTRACTION TO A 2:1 SLOPE IN STEPS AS SHOWN IN DETAIL 3 DWG. NO. 052019 - 4 of 5.
  - WHERE THE QUALITY OF MATERIAL DOES NOT MEET THE OPERATORS MARKET REQUIREMENTS, THE HORIZONTAL EXTENT OR DEPTH OF EXTRACTION MAY BE REDUCED AND PROGRESSIVE REHABILITATION COMMENCED AS REQUIRED THROUGHOUT THE PIT.
- B LAKES**
- ONCE EXTRACTION IS COMPLETE, DEWATERING WILL CEASE AND LAKES WILL BE CREATED IN THE EXCAVATED AREAS.
  - OUTLET STRUCTURES FOR THE LAKE WILL BE CREATED AT THE LOCATIONS SHOWN AS PART OF THE PROGRESSIVE REHABILITATION OF THE SLOPES. THE STRUCTURES WILL BE DESIGNED IN CONSULTATION WITH QUALIFIED PROFESSIONALS TO PROVIDE FOR USE BY FISH AND WILDLIFE.
  - ALL AVAILABLE MATERIALS SUCH AS ROOT WADS, LOGS AND BRANCHES, BRUSH PILES AND ROCKS AND BOULDERS MAY BE PLACED RANDOMLY ON THE QUARRY FLOOR. THESE MATERIALS WILL PROVIDE AQUATIC HABITAT AS THE LAKES FILL.
  - IT IS ANTICIPATED THAT IT WILL TAKE 30 TO 40 YEARS FOR THE LAKE REACH A STABLE LEVEL.
- C SEEDING AND PLANTING**
- ALL AVAILABLE OVERBURDEN AND ORGANIC MATERIAL WILL BE PLACED ON BACKFILLED SLOPES AND THE AREAS WILL BE SEEDED WITH A NATIVE GRASS SEED MIX AS SOON AS POSSIBLE TO CONTROL EROSION.
  - NATIVE PLANT SPECIES WILL BE PLANTED OR TRANSPLANTED IN CLUSTERS ON STEPPED AND BACKFILLED SLOPES.
  - PLANTING NODES WILL BE CREATED THROUGHOUT THE STOCKPILING/PROCESSING AREA UTILIZING ALL AVAILABLE OVERBURDEN, TOPSOIL AND ORGANIC MATERIAL.
  - NODES WILL BE APPROXIMATELY 100 SQUARE METRES IN AREA WITH RANDOM SHAPES AND SPACING.
  - NATIVE/LOCAL PLANT MATERIAL WILL BE PLANTED OR TRANSPLANTED TO THE NODES.

**FINAL REHABILITATION**

- ALL EQUIPMENT, AGGREGATE, SCALES, SCALE HOUSE, FUEL STORAGE, AND THE ROAD BETWEEN THE SETTLING/EQUALIZATION POND AND THE LAKE WILL BE REMOVED FROM THE SITE. MAINTENANCE BUILDING MAY REMAIN FOR PRIVATE USE.
- ALL STOCKPILES OF OVERBURDEN AND ORGANIC MATERIAL WILL BE UTILIZED IN PROGRESSIVE AND FINAL REHABILITATION.
- THE ANTICIPATED FINAL END USE IS PRIVATE RECREATION OPEN SPACE.
- THE INTERNAL ROAD WILL REMAIN FOR ACCESS TO SITE.
- FOR SPECIES SUITABLE FOR QUARRY REHABILITATION SEE TABLE BELOW.

|   |  |
|---|--|
| <ul style="list-style-type: none"> <li>White Spruce (<i>Picea glauca</i>)</li> <li>Red Pine (<i>Pinus resinosa</i>)</li> <li>Eastern White Cedar (<i>Thuja occidentalis</i>)</li> <li>Tamarack (<i>Larix laricina</i>)</li> <li>Largetooth Aspen (<i>Populus grandidentata</i>)</li> <li>Trembling Aspen (<i>Populus tremuloides</i>)</li> <li>Pin Cherry (<i>Prunus pensylvanica</i>)</li> <li>Red Maple (<i>Acer rubrum</i>)</li> <li>White Birch (<i>Betula papyrifera</i>)</li> <li>Black Locust (<i>Robinia pseudo-acacia</i>)</li> <li>Choke Cherry (<i>Prunus virginiana</i>)</li> <li>Red-osier Dogwood (<i>Cornus stolonifera</i>)</li> <li>Staghorn Sumac (<i>Rhus typhina</i>)</li> <li>Narrow-leaved Meadowsweet (<i>Spiraea alba</i>)</li> <li>Red Raspberry (<i>Rubus idaeus</i>)</li> <li>Smooth Serviceberry (<i>Amelanchier laevis</i>)</li> <li>Common Blackberry (<i>Rubus allegheniensis</i>)</li> <li>Canada Bluegrass (<i>Poa compressa</i>)</li> <li>Timothy (<i>Phleum pratense</i>)</li> </ul> | <ul style="list-style-type: none"> <li>Perennial Rye (<i>Lolium perenne</i>)</li> <li>Alfalfa (<i>Medicago sativa</i>)</li> <li>Red Clover (<i>Trifolium pratense</i>)</li> <li>Rough Hair Grass (<i>Agrostis scabra</i>)</li> <li>Poverty Oat Grass (<i>Danthonia spicata</i>)</li> <li>Little Bluestem (<i>Schizachyrium scoparium</i>)</li> <li>Sideoats Grama (<i>Bouteloua curtipendula</i>)</li> <li>New England Aster (<i>Aster novae-angliae</i>)</li> <li>Lanceleaf Coreopsis (<i>Coreopsis lanceolata</i>)</li> <li>Flat Topped White Aster (<i>Aster umbellatus</i> var. <i>umbellatus</i>)</li> <li>Philadelphia Fleabane (<i>Erigeron philadelphicus</i> ssp. <i>philadelphicus</i>)</li> <li>Black-eyed Susan (<i>Rudbeckia hirta</i>)</li> <li>Canada Goldenrod (<i>Solidago canadensis</i>)</li> <li>Gray Goldenrod (<i>Solidago nemoralis</i> ssp. <i>Nemoralis</i>)</li> <li>Canada Milkvech (<i>Astragalus canadensis</i>)</li> </ul> |
|---|--|

**LEGEND**

- LICENCED BOUNDARY
- LIMIT OF EXTRACTION
- LOT/CONCESSION LINE
- BOUNDARY OF LANDS WITHIN 120m OF LICENCE BOUNDARY
- TRAIL
- CONTOURS & SPOT ELEVATIONS
- PIT ENTRANCE/EXIT
- GATE
- TREES/BUSH
- BENCH MARK
- WETLAND DIGITIZED FROM AERIAL PHOTOGRAPHY
- INTERMITTENT WATERCOURSE
- WATERCOURSE
- SECTION ARROWS
- REHABILITATED LAKE
- REHABILITATED COMPLETELY
- UNDERGOING PROGRESSIVE REHABILITATION
- UNDER EXTRACTION
- UNEXCAVATED AREA
- PLANTING NODES (SCHEMATIC ONLY)
- LAKE OUTLET
- FINAL DEPTH OF EXTRACTION BELOW WATER TABLE

**SCHEDULE OF REVISIONS PRIOR TO LICENCE**

| NO. | DATE          | DESCRIPTION                    | APPROVED |
|-----|---------------|--------------------------------|----------|
| 1   | DEC. 11/08    | REV PER MNR COMMENTS NOV 24/08 | TJP      |
| 2   | APRIL 19 2011 | GENERAL REVISIONS              | TJP      |

**SCHEDULE OF AMENDMENTS**

| NO. | DATE | DESCRIPTION | APPROVED |
|-----|------|-------------|----------|
|     |      |             |          |
|     |      |             |          |
|     |      |             |          |

**TRUDY P. PATERSON**  
 IS APPROVED BY THE  
 MINISTRY OF NATURAL RESOURCES  
 PURSUANT TO SECTION 8 (4) OF THE  
 AGGREGATE RESOURCES ACT TO  
 PREPARE AND CERTIFY SITE PLANS.  
*Trudy Paterson* Apr 19/11  
 TRUDY P. PATERSON DATE

**GIOFAM SEBRIGHT QUARRY  
 CITY OF KAWARTHA LAKES**  
 APPLICANT: GIOFAM INVESTMENTS INC.  
 BOX 1359  
 UXBRIDGE, ONTARIO  
 L9P 1N6

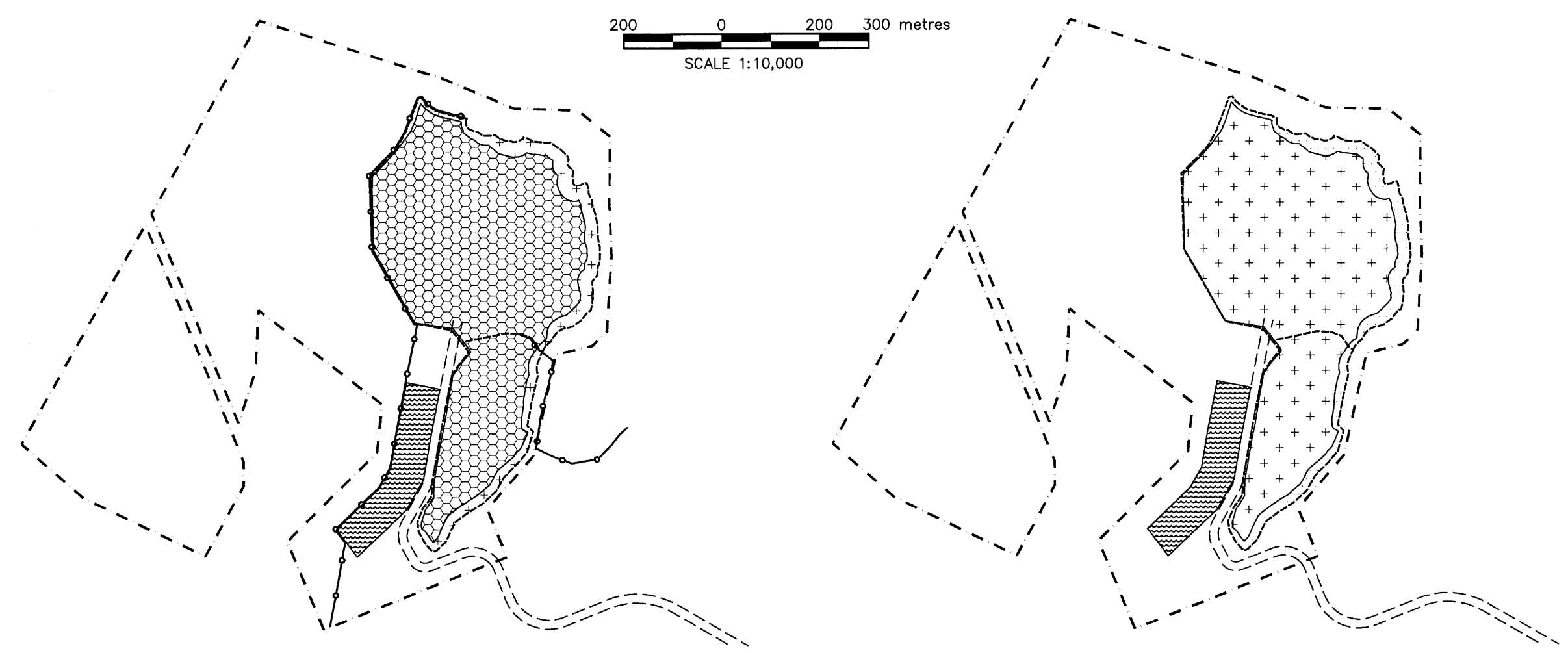
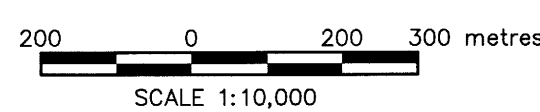
**PROGRESSIVE & FINAL REHABILITATION PLAN**

|                     |                          |
|---------------------|--------------------------|
| PROJECT NO. 05-2019 | DRWG. NO. 052019 -3 OF 5 |
| DATE: APRIL 2011    | SCALE: 1:4000            |
| DRAWN: TAR/CAP      | CHECKED: TJP             |
|                     | APPROVED: TJP            |

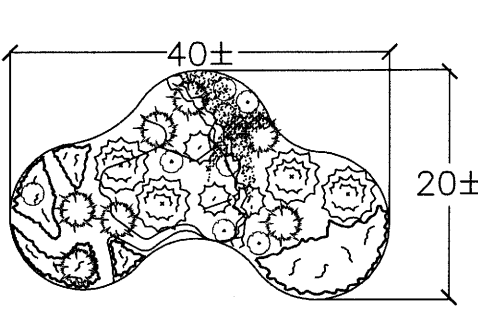


**CONSULTING ENGINEERS & PLANNERS**  
 951 BEECHER RD. SUITE 107000 BARRIE, ONTARIO N6M 6C1  
 TELEPHONE (705) 726-1141 FAX (705) 726-0331

**PROGRESSIVE REHABILITATION**



**TYPICAL PLANTING NODE N.T.S**



Copyright © 2011 Skelton Brumwell & Associates Inc. All rights reserved. This document is protected by copyright laws and may not be reproduced in any manner, or for any purpose, except with the written permission of the copyright holder.