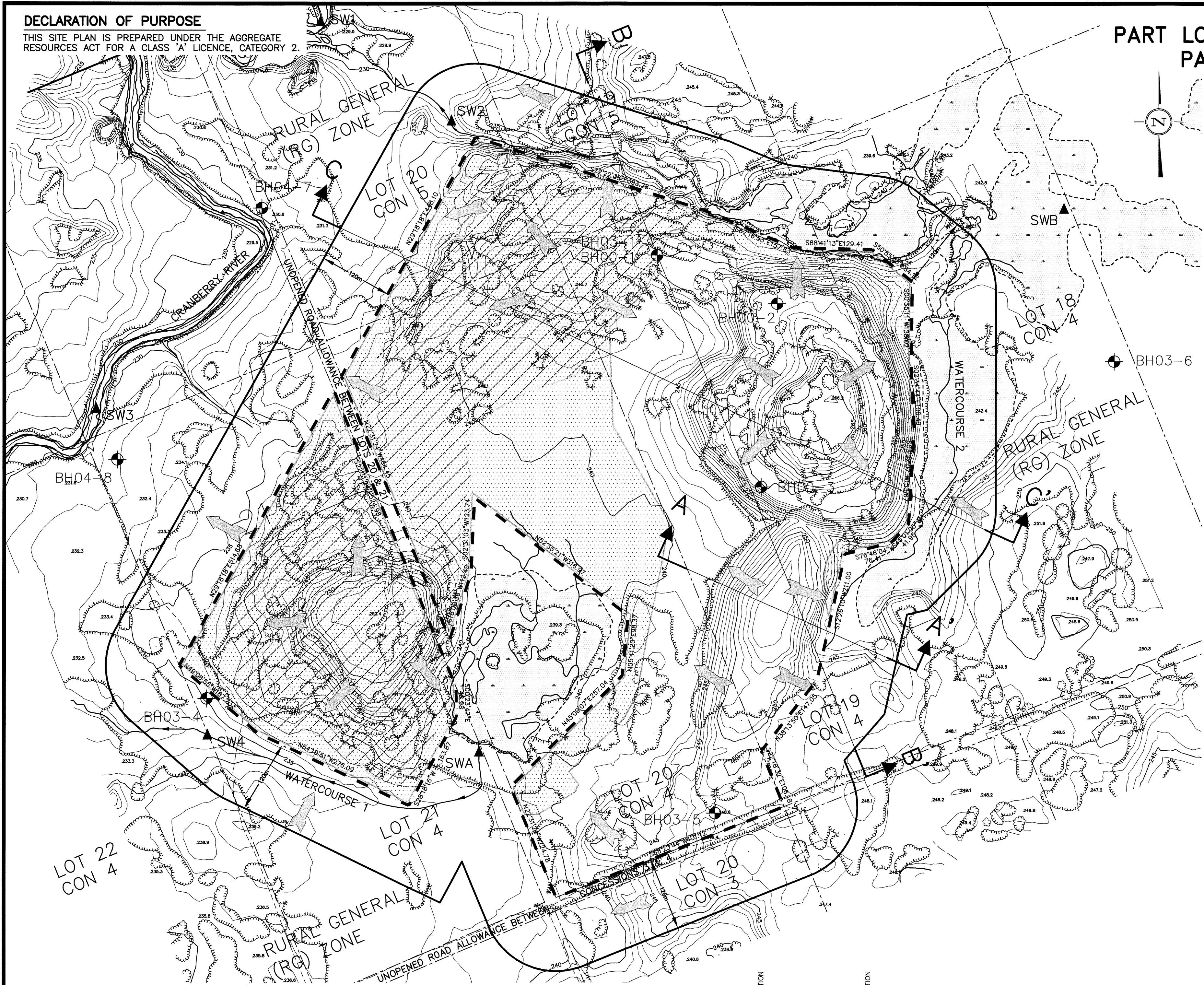
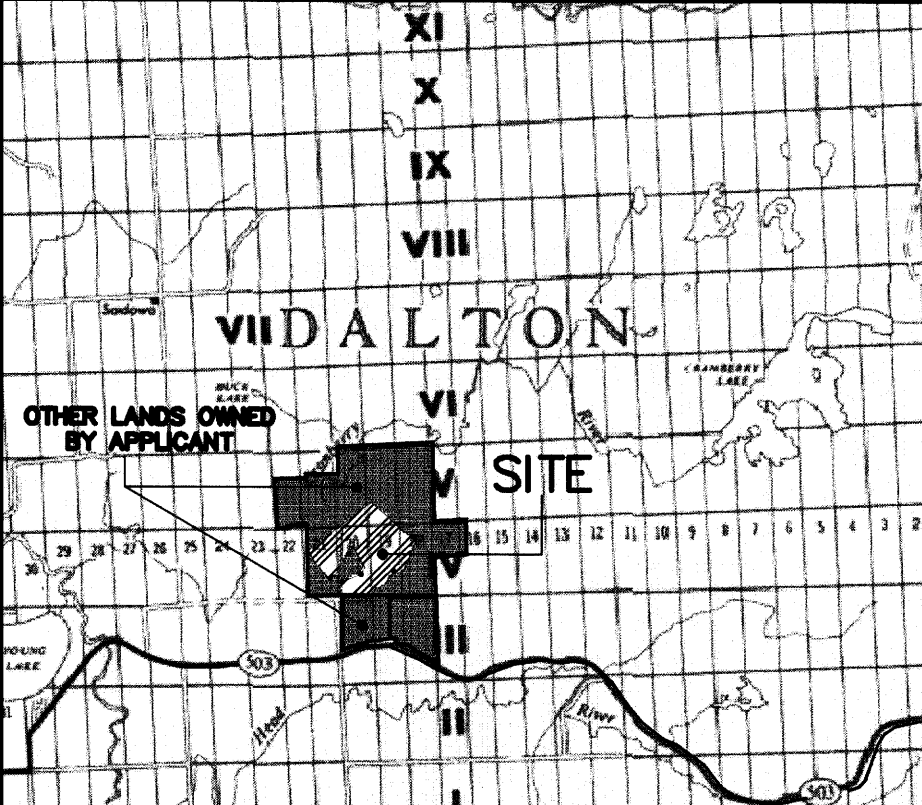
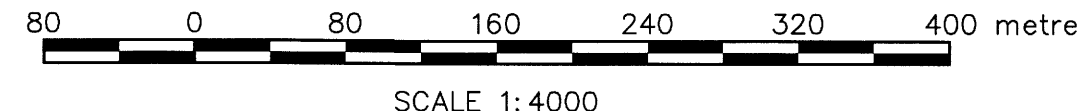


2019-1

**DECLARATION OF PURPOSE**  
 THIS SITE PLAN IS PREPARED UNDER THE AGGREGATE RESOURCES ACT FOR A CLASS 'A' LICENCE, CATEGORY 2.

**PART LOTS 18, 19, 20, & 21 CONCESSION 4**  
**PART LOTS 19, 20 CONCESSION 5**  
 GEOGRAPHIC TOWNSHIP OF DALTON  
 CITY OF KAWARTHA LAKES



- A. SITE PLAN REFERENCES**
- CONTOUR MAPPING AND TOPOGRAPHIC FEATURES BY NORTHWAY-PHOTOMAP LIMITED OCTOBER 13, 2004 USING 1991 AERIAL PHOTOGRAPHY. ALL FEATURES ARE SHOWN TO SCALE.  
 CONTOURS ARE AT 1.0 METRE INTERVALS.  
 ELEVATIONS SHOWN ARE RELATED TO A GEODETIC BENCHMARK DESCRIBED AS: TOP OF PIPE OF GROUNDWATER MONITOR BH03-05. ELEVATION: 248.39 masl.
  - BOUNDARY INFORMATION BASED ON THE BEARING AND DISTANCE OF THE SOUTH LIMIT OF LOT 20, CONCESSION 4 FROM A SITE SURVEY BY C.T. STRONGMAN SURVEY LIMITED, JUNE 20, 2003.
  - ALL LANDS TO BE LICENCED AND WITHIN 120 METRES OF THE PROPOSED LICENCE BOUNDARY ARE ZONED RURAL GENERAL (RG) BY TOWNSHIP OF DALTON BY-LAW 10-77.
  - ALL LANDS TO BE LICENCED AND WITHIN 120 METRES OF THE PROPOSED LICENCE BOUNDARY ARE USED FOR PRIVATE RECREATION EXCEPT FOR LANDS IN LOTS 20 & 21, CONCESSION 3 WHICH ARE USED FOR PASTURE, AND ARE OUTSIDE THE PROPOSED LICENCE.
  - THERE ARE NO BUILDINGS OR STRUCTURES ON OR WITHIN 120 METRES OF THE LICENCE BOUNDARY.
- B. TECHNICAL REPORTS**
- STAGE 1 AND STAGE 2 ARCHAEOLOGICAL ASSESSMENT OF THE PROPOSED GIOFAM QUARRY BY ARCHAEOLOGICAL ASSESSMENTS LTD., DATED APRIL 2006 AND MAY 2007.
  - NATURAL ENVIRONMENT LEVEL 1 AND LEVEL 2 ASSESSMENTS, SEBRIGHT QUARRY BY RIVERSTONE ENVIRONMENTAL SOLUTIONS INC., APRIL 2011.
  - UPDATED HYDROGEOLOGICAL EVALUATION, SEBRIGHT QUARRY BY GENIVAR, APRIL 2011.
  - BLAST IMPACT ANALYSIS BY EXPLOTECH ENGINEERING LTD., APRIL 2011.
  - TRAFFIC IMPACT STUDY BY SKELTON, BRUMWELL & ASSOCIATES INC., REVISED APRIL 2011.
  - UPDATED PERFORMANCE MONITORING PLAN BY GENIVAR, APRIL 2011.
  - TECHNICAL BACKGROUND REPORT BY SKELTON, BRUMWELL & ASSOCIATES INC., REVISED APRIL 2011.
  - DUST MANAGEMENT PLAN BY CHURCH & TROUGHT LTD., APRIL 2011.
- C. SITE DESCRIPTION**
- AREA TO BE LICENCED 83.69 HA
  - THIS QUARRY WILL PRIMARILY PRODUCE SPECIALTY AGGREGATE FOR HIGH SPEED HIGHWAY ASPHALT. OTHER AGGREGATE PRODUCTS WILL ALSO BE PRODUCED TO OPTIMIZE RESOURCE UTILIZATION.
  - THERE IS NO FENCING ON SITE.
- D. DRAINAGE**
- DRAINAGE OF THE SITE AND THE AREA WITHIN 120 M OF THE SITE IS BY OVERLAND FLOW IN THE DIRECTION SHOWN BY THE ARROWS ON THE PLAN, OR BY INFILTRATION.
- E. GROUNDWATER**
- THE ESTABLISHED GROUNDWATER TABLE IS AT AN ELEVATION OF BETWEEN 228.89 MASL AT BH04-7, JANUARY 24, 2005, AND 236.30 MASL AT BH00-2, SEPTEMBER 30, 2010, BASED ON ON-SITE BOREHOLES AND DESCRIBED IN THE UPDATE HYDROGEOLOGICAL EVALUATION.

BH Number	Monitor Designation	Ground Surface Elevation (masl)	Highest Groundwater Elevation (masl)	Date
BH03-1	II	244.58	240.30	April 2, 2004
	I	244.58	240.24	April 2, 2004, January 24, 2005
BH00-1	OH	244.58	239.52	April 2, 2004
	OH	244.61	244.64	March 22, 2007
BH00-2	OH	256.33	256.30	September 30, 2010
	OH	254.61	247.26	February 17, 2005
BH03-4	II	236.55	235.31	March 22, 2007
	I	236.55	235.36	March 22, 2007
BH03-5	II	247.61	245.64	January 16, 2008
	I	247.61	240.94	September 30, 2010
BH03-6	II	245.20	245.43	March 24, 2008
	I	245.20	245.12	April 2, 2004
BH04-7	II	228.82	228.89	January 24, 2005
	I	228.81	>229.67 Flowing	Numerous dates.
BH04-8	II	231.39	231.68	November 13, 2008
	I	231.27	231.79	September 30, 2010

**SCHEDULE OF REVISIONS PRIOR TO LICENCE**

NO.	DATE	DESCRIPTION	APPROVED
1	DEC 11/08	REV PER MNR COMMENTS NOV 24/08	
2	APRIL 19, 2011	GENERAL REVISIONS	

**SCHEDULE OF AMENDMENTS**

NO.	DATE	DESCRIPTION	APPROVED

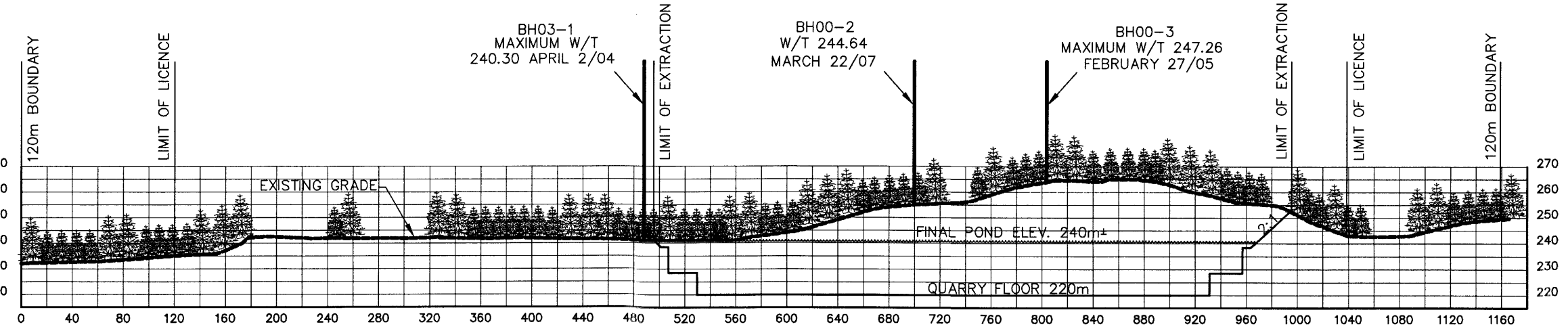
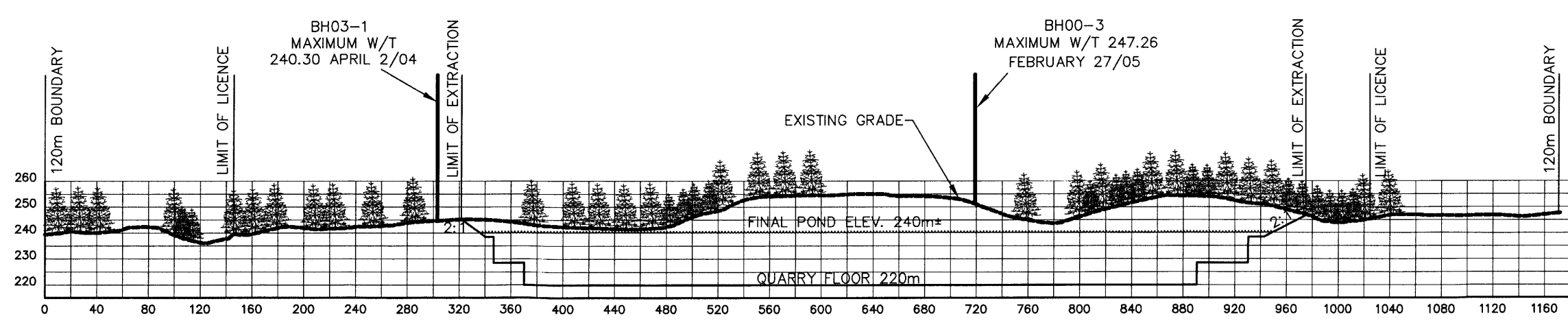
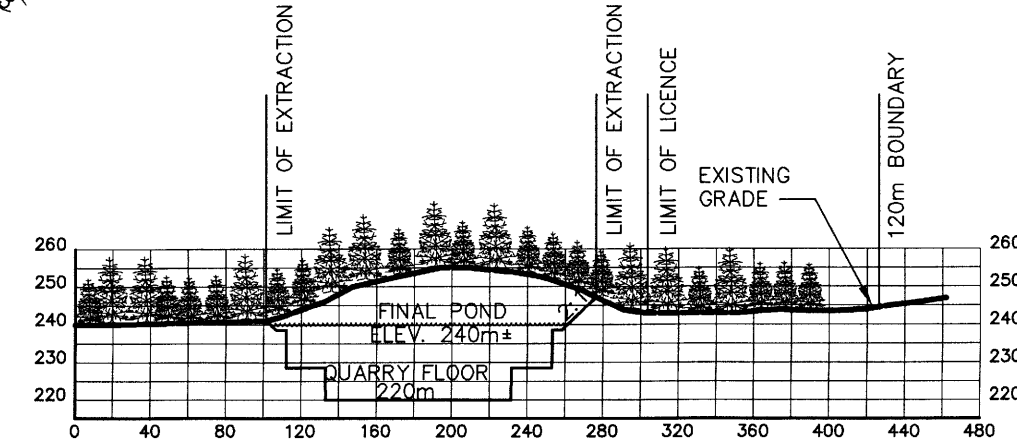
**TRUDY P. PATERSON**  
 IS APPROVED BY THE  
 MINISTRY OF NATURAL RESOURCES  
 PURSUANT TO SECTION 8 (4) OF THE  
 AGGREGATE RESOURCES ACT TO  
 PREPARE AND CERTIFY SITE PLANS.  
*Trudy P. Paterson* Apr 19/11  
 TRUDY P. PATERSON DATE

**SEBRIGHT QUARRY**  
 CITY OF KAWARTHA LAKES  
 APPLICANT: GIOFAM INVESTMENTS INC.  
 BOX 1359  
 UXBRIDGE, ONTARIO  
 L9P 1N6

**EXISTING FEATURES & CROSS SECTIONS**

PROJECT NO. 05-2019	DRWG. NO. 052019	1 of 5
DATE: APR 2011	SCALE: 1:4000	
DRAWN: TAR	CHECKED: JP	APPROVED: JP

**Skelton Brumwell**  
 & ASSOCIATES INC.  
 ENGINEERING PLANNING ENVIRONMENTAL CONSULTANTS  
 93 BELL FARM ROAD, SUITE 107 BARRIE, ONTARIO L4M 5G1  
 TELEPHONE (705) 726-1141 FAX: (705) 726-0331



FOR EXTRACTION AND REHABILITATED SLOPE DETAILS  
 SEE DWG. 3 OF 5 AND 4 OF 5

Copyright © 2011 Skelton Brumwell & Associates Inc. All rights reserved. No part of this document may be reproduced, stored in a retrieval system, or transmitted in any form or by any means, except with the written permission of the copyright holder.